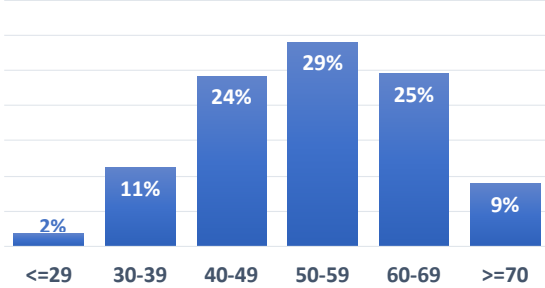
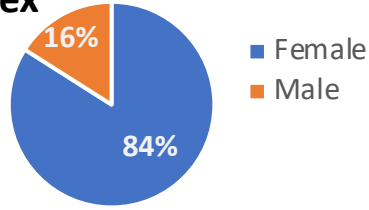


Participant count: 1,284

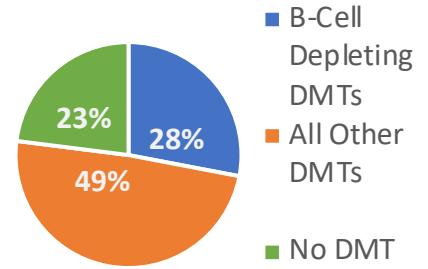
## Age



## Sex



## Disease-Modifying Therapies Used in the Past Year



MS Type	#	%
RRMS	838	68%
SPMS	259	21%
PPMS	104	8%
CIS/RIS	27	2%

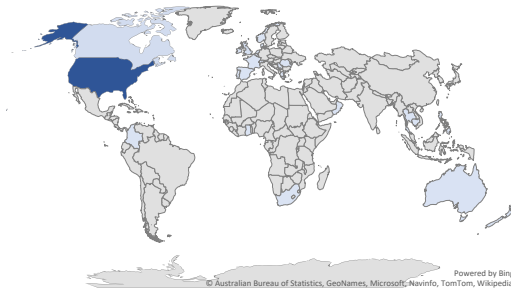
## Race

White	92%
Black/African-American	4%
Native American	<1%
No Answer	2%

## Ethnicity

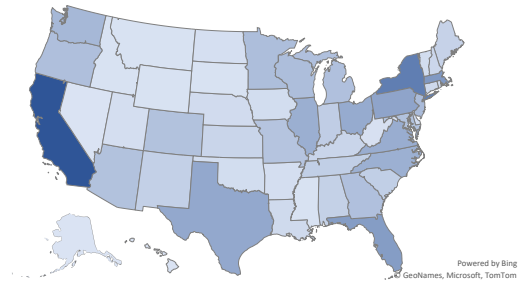
Middle Eastern	<1%	Hispanic	5%
Asian	<1%	Not Hispanic	94%
Native Hawaiian	<1%	No Answer	1%
Multi-Racial	2%		

Country of residence 1 1140



Participants represent **27** different countries, all **50** US states and the District of Columbia.

State of residence 1 112



## What are we learning about experiences with the COVID-19 vaccines?

Vaccine Type	#	%
Pfizer	545	57%
Moderna	332	35%
J&J	45	5%
AstraZeneca	30	3%
Sinovac	1	<1%
Don't Know	2	<1%

- **955** participants have received an initial dose with **61%** experiencing side effects.
- **640** have received a second dose with **71%** experiencing side effects.
- **The majority of side effects were reported to be mild or moderate**, with injection site pain, fatigue and headache remaining the most common effects.

*Results are now being analyzed – we look forward to sharing them with you soon!*